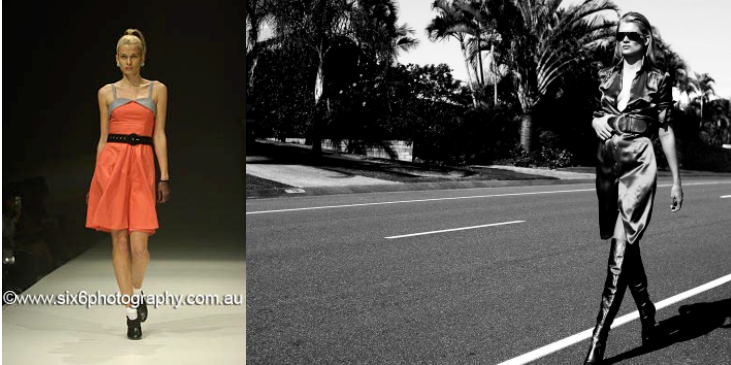


SAMANTHA CROSSLEY



Height:	5'10"
Bust:	33B"
Waist:	25"
Hips:	35.5"
Dress:	8 to 10
Shoe:	9
Hair:	Blonde
Eyes:	Green

BRIEF:

Samantha Crossley is such a beautiful model and her professionalism and kind nature is shown through her repeat bookings with designers, particularly on the runway. Samantha has concentrated working in the Australian market for 2 years and is now available for international bookings.

SHOWS:

- Australian Fashion Week:
 - ◇ Azzollini
 - ◇ Ae'Lkemi
 - ◇ Bek & Bridge
 - ◇ Cybele
 - ◇ Hannah McNicol
 - ◇ High Tea with Mrs Woo
 - ◇ Kate Hurst
 - ◇ Laurence Pasquier
 - ◇ Luci Torres
 - ◇ MaraJoara
 - ◇ Milk & Honey
 - ◇ Nookie
 - ◇ Olive Clothing
 - ◇ One Fell Swoop
 - ◇ Oscar & Elvis
 - ◇ Pani
 - ◇ Preacher
 - ◇ Shilo
 - ◇ Story by Tsang
 - ◇ Stretsis
 - ◇ Syraiful Baharim
 - ◇ Tiffany Treloar
 - ◇ Verduci-Smith
 - ◇ Woolliwoolli

CONTINUED OVER...



models / talent / actors

- Brisbane Fashion Fest Launch
- Mercedes Start Up
- QUT Velocity
- National Retail Association
- Mazda Launch
- Marina Mirage
- Spirit
- Melbourne Cup
- L'Oreal Hair
- Gina Kim
- Saba
- Oroton
- Elle McPherson Intimates

EDITORIAL:

- Culture Magazine
- QLD Brides
- Chick Magazine

ADVERTISING:

- Triumph Exclusives
- Sloggi
- Colorado
- Mathers
- Budget Eyewear
- QWeekend Lingerie Shoot

Please note that the final decision on whether this international model comes over for Air NZ Fashion Week is dependant on the number of shows the model secures, and their mother agency's agreement of the final terms of the trip.

If an international model is confirmed and then cancelled once they have arrived in New Zealand, a 50% cancellation fee will apply without exception.